

HURRICANE PROTECTION

PROTECT YOUR INVESTMENT





EA STORMLOCS™ & HINGED STORM PANELS



Translucent 12 panels give you the ability to illuminate your home in daylight hours before, during and after a hurricane.

Eyewall Armor® StormLocs™ Storm Shutters offer a wide array of benefits

- Our .050" and .060" aluminum panels carry statewide product approval, including HVHZ & non-HVHZ. The .050" panels are tested to ASTM E1886-E1996 as well as to the Miami-Dade TAS 201-202-203 standards. The .060 panels are tested to the TAS standards only.
- Our ultra-light .018" (28 gauge), and .023" (24 gauge), galvanized steel EA panels with rolled safety edges are tested for 9-lb. large missile impact to A.S.T.M. E1886 and E1996 standards for use in the non-HVHZ and throughout the International Building Code areas.
- Unparalleled Hurricane Protection. Easy Installation, lightweight & corrosion resistant.
- Cost effective; may result in reduced Insurance premiums.
- Multiple track options with a wide selection of panel color options: Mill finish, Galvanized, Clear or White with tracks available in White or Bronze.
- Patented clear metal clear applications.
- U.S. Patents #6,868,642 B2 & 6,615,555 B2.



EA Storm Panels Increase Property Value



Professional In-House Customer Service & Technical Support

6.8, SL & H.R. ACCORDION SHUTTER SYSTEMS

Eyewall Armor® Accordion Shutter Systems offer a wide array of benefits:

- Offset Screw boss; the only hinge that can be lubricated.
- Unparalleled hurricane protection.
- Corrosion resistant.
- Long-term durability & long-lasting performance.
- Easy maintenance and care.
- Less obtrusive than any other accordion system.
- Designed to cover almost any type of opening.
- Fast and simple two-step locking:
 - 1) Engage the centers.
 - 2) Deploy the locking device, no additional locking rods required!
- Available in your choice of four standard designer colors: White, Bronze, Ivory, and Beige.



The EA Accordion Shutter System has the tightest blade stacks in the industry. For every foot of opening, our blades stack to one inch (including centermates), making the EA Accordion System almost undetectable on your home.



Accordion Shutters Increase Property Value



Professional In-House Customer Service & Technical Support

H.R. Accordion Systems

The H.R. (High Rise) Systems share the same features as the standard 6.8 and SL Accordion Systems, but is engineered specifically for High Rise structures, which require much higher wind loads.



The H.R. System is capable of spans up to 15.5 feet in height & is tested to pressures beyond 300 psf.

EA 44MM & MS 56MM ROLL SHUTTER SYSTEMS



MS 56mm Aluminum Roll Shutters are available in sizes up to 256" in width and 252" in height.



Our EA 44mm & MS 56mm Aluminum Roll Shutters provide a wide array of benefits:

- MS 56mm available with End Retention & Non-End Retention. EA 44mm available with End Retention only.
- EA 44mm and MS 56mm available with Vented and Non-Vented Slats available.
- EA 44mm available in widths up to 146.5".
- MS 56mm available in widths up to 256" and heights up to 252".
- Motorization available with Eyewall Armor® tubular motors from 20Nm-300Nm and wireless electronics which accommodate a wide range of applications.
- EA 44mm has an ultra compact roll diameter allowing 72" openings in a 7" box and up to 108" in an 8" box.
- Recommended for doors, windows, porches, lanais, balconies, storefronts and more.
- Our Rolling Shutters will provide your home or business with unparalleled comfort and convenience while affording you maximum protection against intruders and harsh elements.
- MS 56mm Aluminum Roll Shutters have some of the industry's highest LOAD BEARING capacities. The design of the End Retention System is so strong that a 9.5' wide x 20' tall shutter is capable of withstanding over 22,000-lbs. of test load pressure.

EA 44mm Aluminum Roll Shutters have an ultra compact roll diameter allowing 72" openings in a 7" box and up to 108" in an 8" box.



- ✓ Roll Shutters Increase Property Value
- ✓ Professional In-House Customer Service & Technical Support

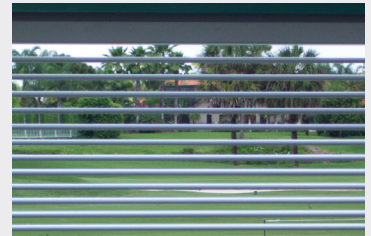
EA BAHAMA & COLONIAL SHUTTERS

Eyewall Armor® FullView™ and UltraView™ Bahama Shutters offer a wide variety of value added features including:

- 53.5" Clear Span.
- Articulating louvers (no backing required).
- Easy to operate and adjust.
- Fully-tested to A.S.T.M. E1886-E1996 TAS 201-202-203.
- 9-lb. large missile impact resistant.
- FullView has almost 2" between articulating louvers, UltraView just under 4"!
- Increased energy efficiency.
- Unobstructed airflow in the open position.
- Variable adjustments (fully-shut to wide-open).
- Convenient light, ventilation & privacy control.
- Patented.



Our FullView™ and UltraView™ Bahama offers the best outward view of any impact rated Bahama.



Eyewall Armor® Colonial Shutters provide a wide array of benefits including:

- Virtually maintenance free operation.
- Aesthetically pleasing with architectural appeal.
- Superior hurricane protection.
- Enhanced privacy and security.
- Ideal light and sound control.
- Homeowner friendly lock-down procedure.
- Sliding mount allows for inside locking - ideal for 2nd story applications.
- Hybrid option allows both patented articulating louvers & solid louvers in the same frame.
- Hinged models feature solid 7/16" high strength aluminum hinge pin.



EA Shutters Provide Increased Property Value



Professional In-House Customer Service & Technical Support

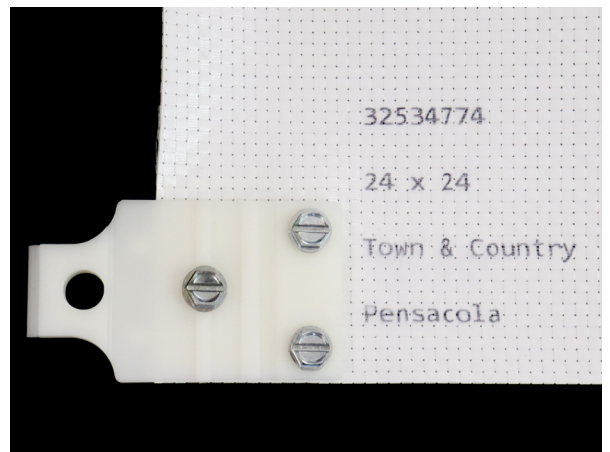
EA HURRICANE FABRIC, FABRIC CLIPS & SCREWS

How many times have you protected your home by installing pieces of plywood over your doors & windows? Have you ever tried doing it alone, especially in an emergency? Not easy, is it?

Great news! With our Eyewall Armor® Hurricane Fabric & Fabric Clips, anyone can quickly & easily install the hurricane rated fabric in a minimal amount of time, even by themselves!

It costs less than other shutter systems and is hurricane rated, unlike plywood. Features include:

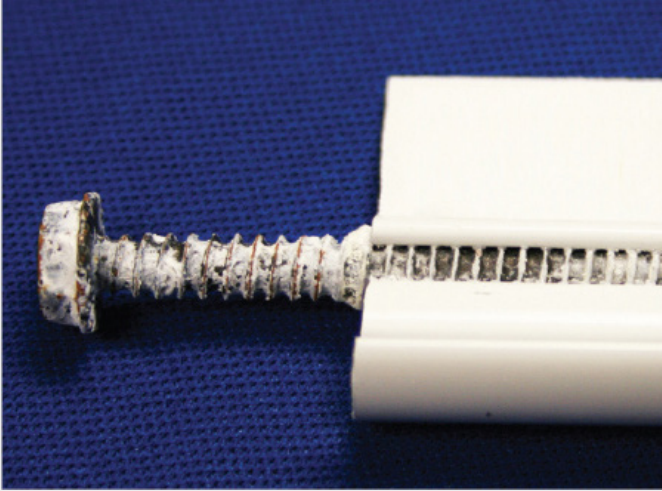
- PVC coated woven Polyester is translucent which transmits light into the structure avoiding the blackout closed-in feeling when deployed.
- High strength coated polyester fiber weave with U.V. coating on both sides.
- Fabric can be cut with good quality shears available at many office and fabric supply stores.
- Nylon one-piece clips securely retain fabric with only 3 #14 x ½" screws.
- Easily cut to match arched, round and irregular window shapes.
- Cover garage openings using a 2 x 2 x .125 removable angle at bottom.
- Maximum pressure is +-60psf at 120" span.
- Available by the roll, lineal foot and square foot.
- Cut to fit for specific openings.
- Rolls or folds up for compact storage.
- Lightweight for rapid one person emergency deployment.



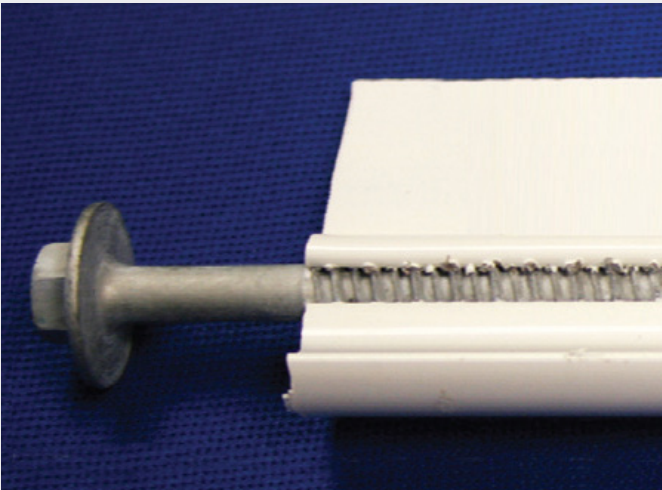
- ✓ EA Hurricane Fabric - Quick & Easy Installation
- ✓ Professional In-House Customer Service & Technical Support

T&C ULTRACOTE 410 SS SCREWS

Our assembly screws are 410 heat-treated Stainless Steel and are plated with a special coating called T&C-Ultracote™ which increases durability and provides more than three times the life span over the very best screw and coating assembly from just a few years ago.



In accelerated laboratory settings, other tested coatings look like this.



410 SS concrete screw with T&C-Ultracote™ after being installed in concrete then threaded in aluminum.



Since 1957, Town & Country Industries has been a leader in the research and development of hurricane protection products, and is one of the world's largest manufacturers of hurricane panels. Our customer service, unmatched quality, selection, and market leading innovation have propelled us to the forefront of our industry.

At Town & Country Industries, our mission is to manufacture and distribute the highest quality Exterior Building Products, Hurricane Protection and Industrial Metals. We are dedicated to the growth and success of our Associates and Customers while providing World Class Service with emphasis on Safety and Ethical business practices.

Protect your investments and your loved ones. Contact us today and enjoy the peace of mind that comes from the best in storm protection.

Town & Country Industries is your partner in Hurricane Protection.

Town & Country
INDUSTRIES

Wholesale Aluminum and Building Products